



PRESENTED BY



## NEW YORK YACHT CLUB RACE WEEK AT NEWPORT

Presented by ROLEX

*July 16-21, 2018*  
Newport, Rhode Island

### **SAILING INSTRUCTIONS incorporating AMENDMENT #1 & #2**

#### **1 RULES**

- 1.1** The regatta will be governed by the rules as defined in *The Racing Rules of Sailing* (RRS). RRS Appendix D, Team Racing Rules, will not apply for the Race Week Team Trophy.
- 1.2** Safety Equipment Requirements:
- a) All yachts shall comply with the US Nearshore section of the NOR Addendum 1 – US Safety Equipment Requirements (USSER) and shall comply with their class rules, where applicable.
  - b) USSER 2.4.2 through 2.4.8 regarding Hull and Structure: Lifelines shall apply, except that yachts not normally rigged with lifelines are exempt for these requirements and shall wear approved PFDs at all times while racing. This requirement does not apply to Classics, 6 Metres or 12 Metres, although they are strongly encouraged to wear PFDs.
  - c) In the event of a conflict between these Requirements and applicable class rules, the class rules shall apply.
- 1.3** The US Sailing Prescriptions to the RRS posted as NOR Addendum 2 on the Race Week website shall apply.
- 1.4** The current NYYC Classics Rules that are posted as NOR Addendum 3 shall apply to all boats sailing in the Classics or Spirit of Tradition classes.
- 1.5** The 2018 IRC Rules Parts A, B and C shall apply to boats racing under IRC.
- 1.6** The 2018 PHRF-NB Regulations shall apply to boats racing under PHRF. There are no crew weight limits.
- 1.7** The 2018 ORC Rating Systems shall apply to boats racing under ORC.
- 1.8** The current MultiRule shall apply to boats racing in the Offshore Multihull division.
- 1.9** 12 Metre Class only: Man Overboard - In the event that a crew member falls overboard and is no longer connect to the yacht, she shall immediately:
- a) deploy appropriate ‘man overboard’ devices,
  - b) notify the Race Committee on the fleet VHF channel that she has a man overboard,
  - c) sail clear of all other yachts racing as soon after the incident as practical, and
  - d) Proceed to rescue the crew member unless nearby support vessels can effect a safer or faster rescue.
- It is expected that the closest official support boat will immediately proceed to assist with crew member rescue. The yacht whose crew member fell overboard and was no longer connected to the yacht, and so notified the Race Committee, shall be scored equal to the number of starters for that race without a hearing. This changes RRS 63.1, A4 and A5.
- 1.10** C&C 30 Class only: Class Rules Section J are invoked as follows:
- a) Rule J.3 shall apply at all times.
  - b) Rule J.4 shall only apply for the Middle Distance Race.

- 1.11** Liability Waiver: No crew shall be aboard a yacht while racing unless he/she has executed the online Liability Waiver Form. The Liability Waiver Forms are available on the Race Week website. Registration will not be complete without receipt of a complete Liability Waiver Form from each crew member.

## **2 COMMUNICATION**

- 2.1** Notices, including race documents, results, and amendments, will be posted on the Official Notice Board. Jury information, including protest time limits and hearing schedules, will be posted on the Jury Notice Board. Both boards are located in the courtyard of the NYYC Sailing Center at Harbour Court. This information may also be posted on the Race Week website.
- 2.2** Flag signals will be flown from the western yardarm of the flagpole at Harbour Court.
- 2.3** Any change to the sailing instructions will be posted before 0900 on the day it will take effect, except that any change to the schedule of races will be posted by 2000 on the day before it will take effect. Flag "Lima" will be flown to signify such posting.
- 2.4** When pennant "AP" is displayed ashore, "one minute" is replaced with "not less than one hour" in race signal "AP".
- 2.5** Signals designating the rendezvous locations for all circles will be displayed at 0900 each day from the flagpole at Harbour Court. The Race Committee will endeavor to announce the circle assignments and the rendezvous locations as described in SI 3 and SI 5 at that time over VHF Channel 72. The failure to make this announcement or for a yacht to hear this announcement will not be grounds for redress. This changes RRS 62.1(a).
- 2.6** After the rendezvous locations and any other regatta announcements have been made, Race Committee signal boats will monitor and communicate with their respective classes on the circle VHF channels published in SI 2.7.
- 2.7** VHF Channels - The Race Committee VHF channels for each circle are shown below:
- |                |                |
|----------------|----------------|
| a) Blue Circle | VHF Channel 72 |
| White Circle   | VHF Channel 69 |
| Green Circle   | VHF Channel 71 |
- 2.8** The Race Committee will endeavor to announce the lat/long positions of the signal boat over the circle VHF channel. Failure to make such an announcement, nor the timing of any announcement, shall not be grounds for redress. This changes RRS 62.1(a).
- 2.9** Yachts retiring shall inform the Race Committee on their circle VHF channel or by calling (401) 845-9633.
- 2.10** Each yacht shall carry a VHF radio capable of communicating with the Race Committee on their circle channel.

## **3 CLASSES AND IDENTIFICATION**

- 3.1** The Organizing Authority will divide boats into classes. Each class will be given a numeral or alphabetic designation and be assigned each day to one of three circles (Blue, White or Green). Note that a class may sail in different circles and be assigned different numeral or alphabetic designations on different days.
- 3.2** Format – The Race Committee will notify competitors (no later than 2000 on the day before they will take effect) of the circle assignments for each class and the intended type of racing for the following day:
- |    |  |
|----|--|
| a) | Navigator Races / Middle Distance Race – SI Addendum A (Courses using Government Marks and racing marks on Narragansett Bay and/or Rhode Island Sound) |
| b) | Drop Mark Races – SI Addendum B (Courses using inflatable buoys on Rhode Island Sound and/or Narragansett Bay)   |
- 3.3** Scratch Sheets – Scratch sheets will be posted on the Official Notice Board and may also be posted on the regatta website.
- 3.4** Class Flags – Each yacht shall display the numeral or alphabetic flag corresponding to her class designation, as shown on the scratch sheet, from her backstay approximately six feet above the deck from the warning signal for the first class on her circle until she is no longer racing. Yachts without a permanent backstay shall conspicuously display these flags in an alternate position in the aft part of the yacht.
- 3.5** Bow Stickers and Flags - Each yacht shall display the Rolex backstay flag and bow stickers provided at registration while racing. Wooden yachts and Classics are not required to apply the bow stickers.

## 4 SCHEDULE OF RACES

4.1 The course signals are scheduled for 1100 for all circles on Wednesday July 18 through Saturday, July 21.

4.2 No warning signal shall be made after 1500 on Saturday, July 21.

## 5 RENDEZVOUS LOCATIONS

Circle rendezvous locations are listed below and will be designated as described in SI 2.5. See SI Addendum C – NYYC Primary Race Areas.

### Rhode Island Sound:

- Area “A” - in the vicinity of 160° M for 1.2 NM from R “2” QR Whistle marking Brenton Point
- Area “B” - in the vicinity of 120° M for 2.5 NM from R “2” QR Whistle marking Brenton Point
- Area “C” - in the vicinity of 275° M for 3.0 NM from R “2” QR Whistle marking Brenton Point
- Area “ED” - in the vicinity of 225° M for 2.0 NM from R “2” QR Whistle marking Brenton Point
- Area “E” - in the vicinity of 165° M for 5.0 NM from R “2” QR Whistle marking Brenton Point
- Area “F” - in the vicinity of 145° M for 3.5 NM from R “2” QR Whistle marking Brenton Point

### Newport Harbor and near Newport Bridge:

- Area “K” - between Goat Island and Rose Island
- Area “M” - in the vicinity of R “12” west of Rose Island
- Area “O” - in the vicinity of Potter Cove (just north of west end of Newport Bridge)

### North of Newport Bridge:

- Area “R” - in the vicinity of 200° M for 0.5 NM from Halfway Rock
- Area “T” - in the vicinity of G “7” QG off Quonset Point

## 6 CHECK-IN

6.1 **Check-in on Land:** Each yacht shall check-in at the registration desk at the NYYC Sailing Center at Harbour Court during the registration times so designated in the Notice of Race.

6.2 **Check-in on Water:** Prior to their course signal each day, each yacht shall check in with the Race Committee signal boat by sailing or motoring by the stern of the signal boat and announcing their sail number.

6.3 **Check-in for Middle Distance Race:** Prior to their course signal, each yacht shall check in with their Race Committee check-in boat displaying an L flag that will be anchored outside the starboard end of the starting box by sailing or motoring by the stern of the check-in boat and announcing their sail number.

## 7 COURSES & MARKS

7.1 The courses and marks are described in the SI Addenda as shown:

Courses using Government Marks SI Addendum A

Drop Mark Courses SI Addendum B

7.2 Government buoys have no required side except when specified as marks of the course. Caution should be exercised for safe navigation.

## 8 THE START

8.1 The intended order of starts for the Middle Distance Race will be included in the Race Committee’s announcement on VHF Channel 72 at 0900. See SI Addendum A.

8.2 A boat that does not start within 10 minutes after her starting signal will be scored Did Not Start without a hearing. This changes RRS A4 and A5.

8.3 The starting line will be between a staff displaying an orange flag on the Race Committee signal boat and the course side of the port-end starting mark.

8.4 Boats whose warning signal has not been made shall avoid the starting area during the starting sequence for other races.

8.5 Middle Distance Race: The Race Committee may delineate a starting box by placing two or more buoys to leeward of the starting line to form a starting box area between these buoys and the starting line. Boats shall keep outside the starting box from the time of the course signals for a race until the warning signal for their class.

- 8.6** Sample sequence:
- 1100 Course Signals
  - 1105 Warning for first class
  - 1106 Preparatory for first class
  - 1110 Start for first class, Warning for second class
  - 1111 Preparatory for second class
  - 1115 Start for second class, Warning for third class
  - 1116 Preparatory for third class
  - 1120 Start for third class, etc.
- 8.7** The Race Committee will endeavor to hail boats observed to be OCS at the start over their respective circle VHF channel and/or by voice. Failure to hail, the timing or order of any such hails, will not be grounds for redress. This changes RRS 62.1(a).
- 9 THE FINISH**
- The finishing line will be between a staff displaying a blue flag on the Race Committee signal boat and the course side of the finishing mark as described in the relevant SI Addendum.
- 10 PENALTY SYSTEM**
- 10.1** If class rules specify a penalty, a yacht that may have broken a rule of Part 2 while racing may take a penalty at the time of the incident as provided in her class rules.
- 10.2** If the class rules do not specify a penalty, rule 44.1 is changed so that a yacht may choose to take either:
- (a) a One-Turn or Two-Turns Penalty in accordance with RRS V1; or
  - (b) a Scoring Penalty in accordance with rule 44.3.
- 10.3** The Protest Committee may impose suitable penalties, other than disqualification, for violations of the World Sailing Offshore Special Regulations or other non-Part 2 rules. This changes RRS 64.1.
- 10.4** For the Middle Distance Race the penalty described in SI 10.2 applies for all yachts. Class Rules do not apply.
- 10.5** A yacht that has taken a penalty shall complete an online penalty acknowledgement form or a paper form available from the Jury Secretary and submit/file it with the Jury Secretary no later than the end of protest time limit.
- 11 TIME LIMITS**
- 11.1** For courses designated in accordance with **SI A3.4, SI A3.5 or SI A3.6**, the time limit for the first boat to sail the course and finish is five hours. Yachts failing to finish within 90 minutes after the first boat sails the course and finishes will be scored Time Limit Expired (TLE) and scored points as described in SI 13.3. This changes RRS 35, A4 and A5.
- 11.2** For courses designated in accordance with **Addendum B**, the time limit for the first boat to sail the course and finish is three hours. Yachts failing to finish within 45 minutes after the first boat sails the course and finishes will be scored Time Limit Expired (TLE) and scored points as described in SI 13.3. This changes RRS 35, A4 and A5.
- 12 PROTESTS AND REQUESTS FOR REDRESS**
- 12.1** Protests or requests for redress shall be submitted to the Jury Secretary in the NYYC Sailing Center or on the online protest form as soon as possible, but not later than one hour after the Race Committee signal boat for that circle has docked. The time limit for filing a protest will be posted on the Jury Notice Board.
- 12.2** Protest notices will be posted as soon as possible on the Jury Notice Board.
- 12.3** Protest hearings will take place at the NYYC Sailing Center as soon as possible after the notices are posted. The Jury will attempt to hear protests in the order of receipt. Representatives of yachts who are parties to a hearing shall remain on call in the vicinity of the protest rooms.
- 12.4** When a yacht has been involved in an incident that may be subject to protest, it is her responsibility to check the protest notices at the end of the protest filing time to see if she is cited in a protest. Failure of any yacht to appear when called for a hearing will be considered by the Jury as grounds for proceeding under RRS 63.3(b).
- 12.5** Breaches of SIs 3.4, 6, 8.4 and 8.5 will not be grounds for a protest by a yacht. This changes RRS 60.1(a).
- 12.6** The penalty for a breach of SI 8.4 or 8.5 shall be a minimum of two points. This changes RRS 64.1.
- 12.7** On the last scheduled day of racing, a written request for reopening a hearing shall be delivered to the Jury Secretary in accordance with RRS 66. If no races are held on the last scheduled day of racing, the written request shall be delivered within one hour after racing has been abandoned. This changes RRS 66.

**12.8** On the last scheduled day of racing, a request for redress based on a Protest Committee decision shall be delivered in writing no later than 30 minutes after the decision was posted. This changes RRS 62.2.

### **13 SCORING**

**13.1** A yacht's series score will be the total of her race scores. This changes RRS A2.

**13.2** One race is required to be completed to constitute a series.

**13.3** Yachts that have started and fail to finish within the finish window listed in SI 11.1 or SI 11.2 for any reason, shall, without a hearing, be scored Time Limited Expired (TLE) by the Race Committee and be assigned points equal to the number of yachts in her class that have sailed the course and finished within the time limit, plus two. This changes RRS A4.1, A4.2, and A5.

**13.4** Teams competing for team trophies will be scored in accordance with the Notice of Race.

**13.5** For scoring purposes, the distance used (as needed) will be that as calculated by the Race Committee.

**13.6** Boats being scored using the combination IRC/ORC score will be scored as follows:

- a) The corrected time under ORC will be calculated according to the Time on Time Offshore Single Number system for the offshore races and the Time on Time Triple Number system for the inshore races. The decision on the Triple number system wind ranges (Low, Medium or High) will be at the sole discretion of the Race Committee and shall not be grounds for request for redress by a boat. This changes RRS 62.1a.
- b) The corrected time under IRC will be calculated according to the TCC.
- c) Each race will then be scored as follows (*final race score*):
  - i. The points scored under ORC and under IRC in accordance with RRS A4 and A5, except as specified under point iii. and iv. below, will be added together.
  - ii. The final race score will be determined from the points thus calculated in accordance with RRS A4 (First – 1 point, Second – 2 points, Third – 3 points, etc...). When there is a tie, the points for the place for which the yachts have tied and for the place(s) immediately below shall be added together and divided equally.
  - iii. A disqualification (DSQ or DNE) or scoring penalty, will apply to the final race score in accordance with RRS A6.
  - iv. Any discretionary penalty imposed by the jury or redress given will apply to the final race score in accordance with RRS A6, unless the jury decides otherwise.

**13.7** For Classics and 12 Metres: The Middle Distance Race will be scored separately from racing on Friday and Saturday.

### **14 SAFETY REGULATIONS**

**14.1** **Restricted Channels:** Competitors are reminded that Narragansett Bay and its approaches are considered restricted channels for commercial traffic and other vessels restricted in their ability to maneuver. Competitors must comply with the government right-of-way rules when in proximity to commercial or privileged marine traffic.

**14.2** **Newport Security Zone:** In the event there is racing in Narragansett Bay, competitors should be aware of heightened security around the Navy base in Newport just to the north of the Newport Jamestown Bridge. The area may be defined by a series of white buoys marking the Newport Security Zone along the coast of the Naval Facilities from Coasters Harbor to the breakwater at the north end of Coddington Cove and the line defined by the buoys shall rank as an obstruction. Yachts shall not enter this area. A Navy patrol boat monitors the area and vessels navigating in the Exclusionary Zone may face action by Coast Guard and Naval authorities.

**14.3** **Additional Restricted Areas:** There may be additional restricted areas due to Navy activity, shipping or fishing operations may be described in an amendment to the sailing instructions.

### **15 PRIZES**

**15.1** Prizes will be awarded as described in the Notice of Race.

**15.2** Additional prizes may be awarded at the discretion of the OA.

## **FURTHER INFORMATION**

The Race Week website can be found at <https://nyyc.org/group/pages/race-week-at-newport>.

### **Regatta Contact:**

New York Yacht Club, Harbour Court  
5 Halidon Avenue  
Newport, RI 02840

Tel: 401-845-9633  
Fax: 401-846-3303  
Email: [sailingoffice@nyyc.org](mailto:sailingoffice@nyyc.org)

# SAILING INSTRUCTIONS

## **ADDENDUM A – COURSES USING GOVERNMENT MARKS**

### **A1 ORDER OF START**

The intended order of start will be announced at course signals on the circle VHF Channel. Classes may not start in numerical order. The Race Committee may combine two or more classes into one start by displaying multiple class flags at the warning signal. The Race Committee will endeavor to announce the next class (es) to start on the circle VHF Channel.

### **A2 MARKS**

**A2.1** The starting mark will be in accordance with SI B2.1.

**A2.2** The finishing mark will be in accordance with SI B2.1.

**A2.3** Special Marks “E” and “L”, if used, will be ~~YELLOW tetrahedron inflatable~~ buoys that are the color of the original marks, in accordance with SI B2.1.

**A2.4** If used, Special NYYC Temporary Inflatable Race Marks 16 and 17 as designated on the current South Bay Race Chart will be ORANGE tetrahedron buoys.

### **A3 COURSES**

**A3.1** All yachts shall pass through the **center span ONLY** for any course passing under the Jamestown Verrazano Bridge and/or the Newport Jamestown Bridge. For the purposes of RRS 32.2(c), the center span shall be considered a gate.

**A3.2** Government marks shall have no required side except when designated as a rounding mark.

**A3.3** The flag(s) designating the course to be sailed will be displayed at course signals. The Race Committee will endeavor to announce the designated courses over the circle VHF channel. Failure to make such an announcement shall not be grounds for redress. This changes RRS 62.1(a).

**A3.4 COURSE 1** – If numeral pennant “1” is displayed, the course will be clockwise around Conanicut Island:

- Special Mark “E”, if used (see SI A4.3)
- RG “NR” Bell 650 yards SW of Beavertail Point to starboard
- The center span of the Jamestown Verrazano Bridge
- C “5” 1,250 yards NW of Conanicut Point to starboard
- R “2” Fl R 4 Sec Bell 900 yards NE of Conanicut Point to starboard
- The center span of the Newport Jamestown Bridge
- Pass to the west of R “12” off Rose Island
- Finish off Fort Adams between a staff displaying a blue flag on a Race Committee boat and the finishing mark, ~~which will be a PINK tetrahedron buoy.~~ The finishing line will be located approximately 0.4 NM north of the Fl R 6 sec Horn “2” on the northern point of Fort Adams.

**A3.5 COURSE 2** – If numeral pennant “2” is displayed, the course will be counter-clockwise around Conanicut Island:

- Special Mark “E”, if used (see SI A4.3)
- Pass to the west of R “12” off Rose Island
- The center span of the Newport Jamestown Bridge
- R “2” Fl R 4 Sec Bell 900 yards NE of Conanicut Point to port
- C “5” 1,250 yards NW of Conanicut Point to port
- The center span of the Jamestown Verrazano Bridge
- RG “NR” Bell 650 yards SW of Beavertail Point to port
- Finish off Fort Adams between a staff displaying a blue flag on a Race Committee boat and the finishing mark, ~~which will be a PINK tetrahedron buoy.~~ The finishing line will be located approximately 0.4 NM north of the Fl R 6 sec Horn “2” on the northern point of Fort Adams.

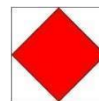
**A3.6 COURSE 3** - If numeral pennant “3” is displayed, the course will be designated using buoys as described in SI Addendum A4. The Race Committee will list the marks in the order to be rounded and the required side to leave each mark. The course will be:

- Start
- Round the marks in the designated order leaving each mark to the designated side
- Finish between a staff displaying the blue flag on the Race Committee boat and the nearby finishing mark.  
Note that Unless A3.9 applies, the intended finishing line will be set at the starting location of the Race Committee signal boat.

**A3.7** In fog at the finish, the Race Committee boat may ring a bell rapidly, for approximately 5 seconds, at intervals.

**A3.8** The same Race Committee boat may or may not start and finish each race.

**A3.9** If at the start, Flag “F” is displayed on a separate pole, the finishing line will be between a staff displaying a blue flag on a Race Committee boat and the finishing mark approximately 0.4 NM north of the Fl R 6 sec Horn “2” on the northern point of Fort Adams. In the absence of the Race Committee boat and/or finishing mark, the finishing line will be on a bearing of 120° M from G “3” Gong southeast of Rose Island.



#### **A4 ADDITIONAL MARKS**

**A4.1** All buoys listed on the current *South Bay Race Chart* provided at registration may be used in Course 3. In addition, the marks listed in SI Addendum A4.3 and A4.4 below are additional rounding marks that might be used.

**A4.2** The *South Bay Race Chart* is to be used for informational purposes only and should not be used for navigation.

#### **A4.3 SPECIAL MARKS**

##### **Special Mark “E”**

- The Race Committee may add a new first mark “E” to any course described in SI Addendum A3.
- If special mark “E” is used, the Race Committee will display flag “E” over a GREEN flag (round special mark “E” to STARBOARD) or over a RED flag (round special mark “E” to PORT).
- In Course 3, the Race Committee will also list “E” as the first mark on the course board as described in SI A3.6.
- The magnetic bearing and distance (in nautical miles to the nearest tenth) to special mark “E” will be posted on a whiteboard on the Race Committee signal boat.



##### **Special Mark “L”**

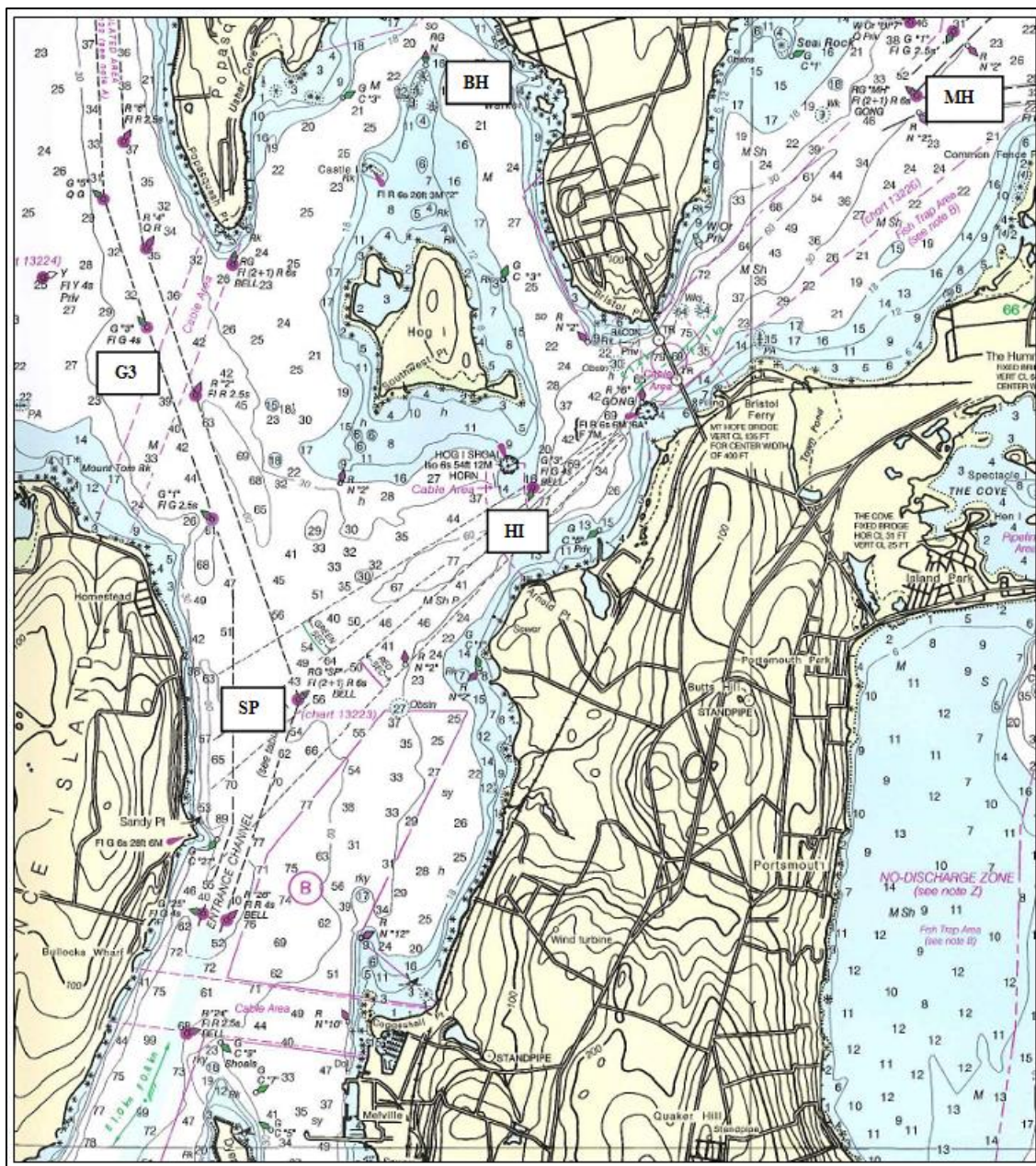
- The Race Committee may set special mark “L” approximately 0.1 NM to windward of the start line.
- If special mark “L” is used, it will be listed as a mark as described in SI Addendum A3.6.

#### **A4.4 GOVERNMENT MARKS & ISLANDS**

See charts 13205, 13218, 13223, 13226 and 13224 for more detail.

<u>Description</u>	<u>Approx. location</u>
1 Gould Island	41° 32.00' N; 071° 20.67' W (center of island)
3 Hope I (east of Quonset) including R “2” at the southwest end and G C “1” at the northeast end	
4 Conanicut Island	
5 RW “NB” Mo(A) WHIS	41° 23.00' N; 071° 23.36' W
7 R “2” Fl R 4s WHIS south of Point Judith	41° 18.46' N; 071° 28.35' W
8 RW “SR” Mo(A) WHIS	41° 25.76' N; 071° 13.38' W
1BI G “1 BI” Fl G 4s BELL north of Block I	41° 15.49' N; 071° 34.55' W
M Block Island including:	
R “4” Fl R 6s WHIS off Southwest Pt	41° 08.73' N; 071° 37.35' W
Black Rock Pt. Buoy 2	41° 08.42' N; 071° 35.74' W
U Buzzards Light Tower Fl 2.5s 67ft 17M Horn	41° 23.82' N; 071° 02.08' W
PR Prudence Island including R “8” northwest of Patience Island and RG N at the northern end	
SP RG “SP” Fl (2+1) R 6s BELL	41° 36.92' N; 071° 17.59' W
G3 G “3” Fl G 4s (approx. 0.5 NM sw of Popasquash Neck)	41° 38.53' N; 071° 18.46' W
MH RGR “MH” Fl (2 +1) R 6s GONG in Mt. Hope Bay	41° 39.54' N; 071° 14.04' W
BH RGR N “Middle Ground Buoy” approx. 0.8 NM n of Hog I	41° 39.68' N; 071° 16.87' W
HI G “3” Fl G 4s BELL approx. 0.4 NM south southeast of Hog I	41° 37.79' N; 071° 16.29' W





Marks near Prudence Island, Bristol and Mt. Hope Bay

# SAILING INSTRUCTIONS

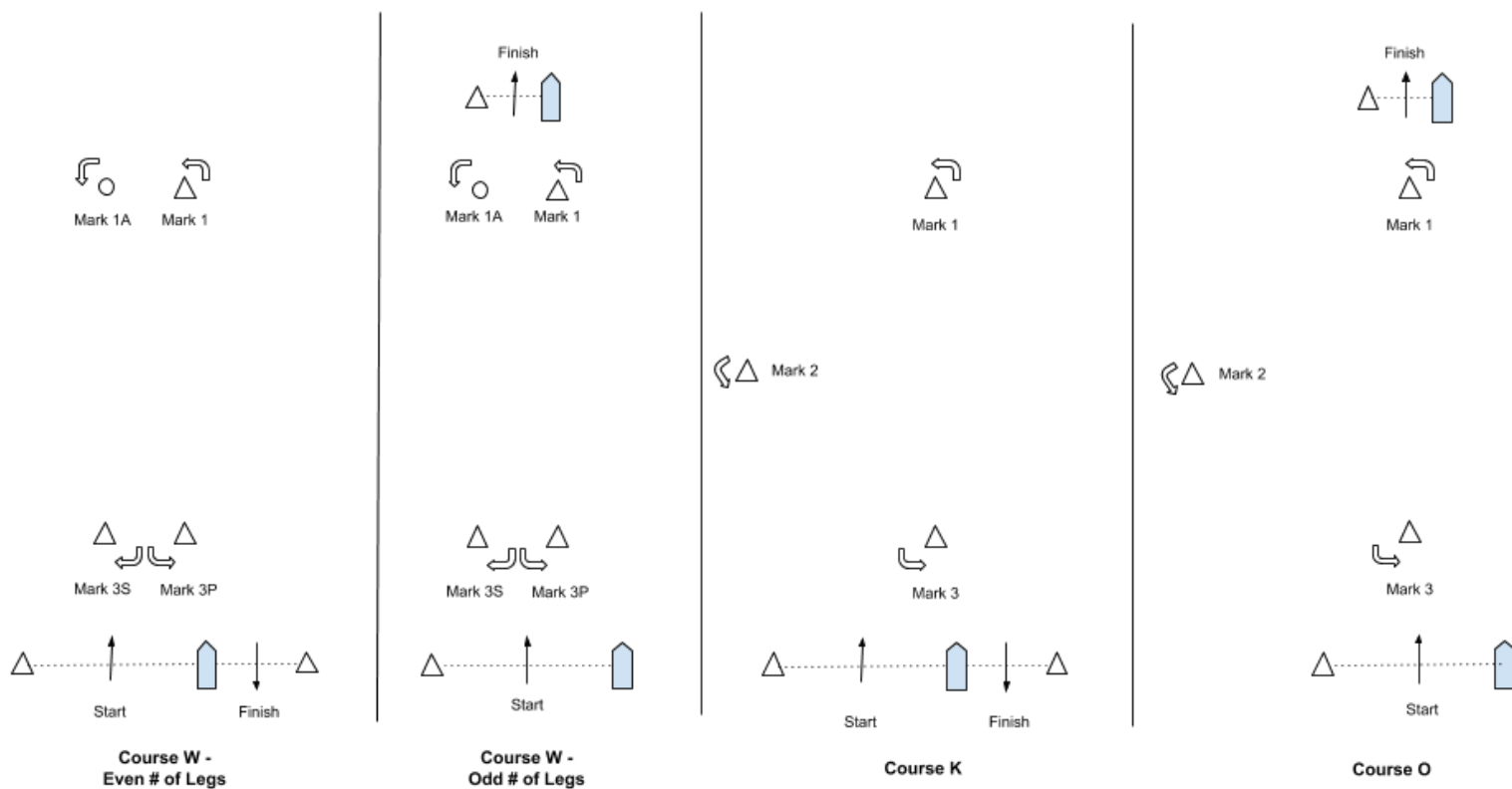
## ADDENDUM B – DROP MARK RACES

### B1 COURSES FOR DROP MARK RACES

**B1.1** The Race Committee signal boat will signal the course by displaying a letter flag and, for course “W”, a numeral pennant as follows:

- W2 Start – 1 – 1A – Finish (downwind)
- W3 Start – 1 – 1A – Gate (3S/3P) – Finish (upwind)
- W4 Start – 1 – 1A – Gate (3S/3P) – 1 – 1A – Finish (downwind)
- W5 Start – 1 – 1A – Gate (3S/3P) – 1 – 1A – Gate (3S/3P) – Finish (upwind)
- W6 Start – 1 – 1A – Gate (3S/3P) – 1 – 1A – Gate (3S/3P) – 1 – 1A – Finish (downwind)
- K Start – 1 – 2 – 3 – 1 – Finish (downwind)
- O Start – 1 – 2 – 3 – 1 – 3 – Finish (upwind)

**B1.2** Course Diagrams:



**B1.2** Course “W” is a Windward/Leeward course with a windward offset mark. A numeral pennant indicating the number of **LEGS** to be raced will be flown beneath Flag “W”. The distance between the windward mark and the offset mark shall not count as a leg for the purposes of indicating the number of legs.

**B1.3** Course “K” is a Triangle/Windward/Leeward course.

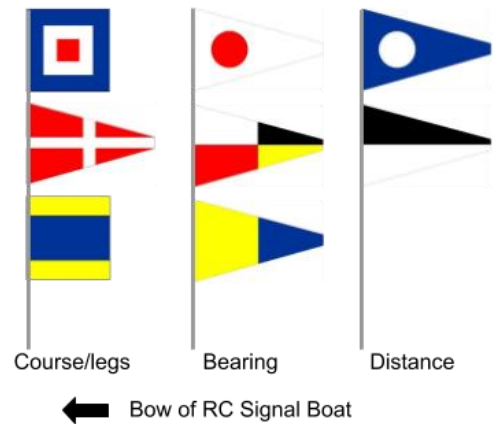
**B1.4** Course “O” is a Triangle/Windward/Leeward/Windward course.

**B1.5** The leeward mark 3 for Courses “W”, “O”, and “K” will be an inflatable mark(s) set approximately 0.10 NM to windward of the starting line. A gate mark 3S/3P may be used for Course “W”.

**B1.6** The course designation, distance and bearing to the windward mark will be signaled using flags displayed on poles or a whiteboard. The course designation will be flown forward, followed by the three numeral pennants designating the magnetic bearing to the first mark, followed by the two numeral pennants designating distance (nautical miles and tenths) to the first mark.

**Example shown:**

*Course W4 with a long windward mark (see SI B1.9); windward mark 195° at 2.6 nm*



**B1.7** Marks, including the windward offset mark, shall be rounded in order and always left to port, except that a gate, when used, shall be rounded as described in RRS 28.2(c).

**B1.8** There will be a windward offset mark adjacent to the windward mark for courses W2, W3, W4, W5, and W6.

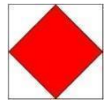
**B1.9 Long Windward Mark:**

- For course “W” with an even number of legs, the Race Committee may set a long windward mark and a short windward mark.
- The distance displayed will be to the **SHORT** windward mark. The long windward mark will be on the same bearing at a distance of 0.5 NM beyond the short windward mark.
- There will be no offset mark at the long windward mark.
- If flag “D” is displayed below the course signals (see diagram on previous page), that class will use the **LONG** windward mark for each weather leg in that race. If flag “D” is **NOT** displayed below the course signals, that class will use the **SHORT** windward mark for each weather leg in that race.

This changes SI Addendum B1.1, B1.2, B1.7, B1.8 and B2.2.

**B1.10 Special Finish Mark “F”**

If flag “F” is displayed on a separate pole, the finishing line for that class will be between a staff displaying a blue flag on a Race Committee boat and an **ORANGE** finishing mark approximately 0.4 NM north of the Fl R 6 sec Horn “2” on the northern point of Fort Adams. In the absence of the Race Committee boat and/or finishing mark, the finishing line will be on a bearing of 120° M from G “3” Gong southeast of Rose Island. This changes SI Addendum B1.1, SI Addendum D1.2, D1.7 and D2.1.



**B2 MARKS FOR DROP MARK COURSES**

**B2.1** Marks will be inflatable buoys as follows:

Circle	Original marks	Starting	Finishing	Change marks
WHITE	Orange	Yellow	Green	Yellow
BLUE	Yellow	Orange	Pink	Orange
GREEN	Yellow	Orange	Pink	Orange

**B2.2** Offset marks will be small round orange buoys.

**B3 COURSE CHANGE**

**B3.1** In addition to the requirements in RRS 33, the Race Committee will attempt to announce any course change on their respective circle VHF channel. Failure to make such an announcement shall not be grounds for redress. This changes RRS 62.1(a).

**B3.2** The new mark will be a different color (orange or yellow) from the original mark as described in SI Addendum B2.1. For a subsequent change, the new mark will be the same as the original mark.

## **B4 THE FINISH**

- B4.1** The finishing line will be between a staff displaying a blue flag on a Race Committee boat and the finishing mark.
- a) For Course “W”, with an odd number of legs, and Course “O”, the finish line will be located approximately 0.1 NM to windward of the windward mark.
  - b) For Course “W”, with an even number of legs, and Course “K”, the finish line will be located approximately 0.1 NM to leeward of the leeward mark and the finishing mark will be on the opposite side of the Race Committee signal boat from the starting mark. See diagrams in SI Addendum B1.1.
- B4.2** If a subsequent race is to be sailed, the finish line Race Committee boat intends to fly Pennant “Second Substitute” with the Blue “On-Station” signal at the finish. If a Class Flag is displayed below Pennant “Second Substitute” the subsequent race is for that class(es) only. In addition, the Race Committee will attempt to announce a subsequent race on their respective circle VHF channel.
- B4.3** In fog at the finish, the Race Committee boat may ring a bell rapidly, for approximately 5 seconds, at intervals. The same Race Committee boat may or may not start and finish each race.



**SAILING INSTRUCTIONS**  
**ADDENDUM C – NYYC PRIMARY RACE AREAS**

